

Validity –  
Going beyond  
suspect links



**InterConnect**2015

The Premier Cloud & Mobile Conference

**February 22 – 26**

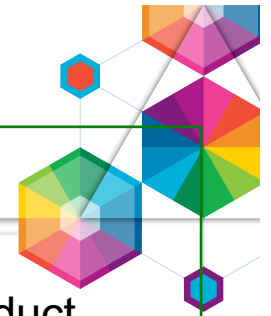
MGM Grand & Mandalay Bay | Las Vegas, Nevada

#ibminterconnect



© 2014 IBM Corporation

## Please note



IBM's statements regarding its plans, directions, and intent are subject to change or withdrawal without notice at IBM's sole discretion.

Information regarding potential future products is intended to outline our general product direction and it should not be relied on in making a purchasing decision.

The information mentioned regarding potential future products is not a commitment, promise, or legal obligation to deliver any material, code or functionality. Information about potential future products may not be incorporated into any contract. The development, release, and timing of any future features or functionality described for our products remains at our sole discretion.

Performance is based on measurements and projections using standard IBM benchmarks in a controlled environment. The actual throughput or performance that any user will experience will vary depending upon many factors, including considerations such as the amount of multiprogramming in the user's job stream, the I/O configuration, the storage configuration, and the workload processed. Therefore, no assurance can be given that an individual user will achieve results similar to those stated here.

# Acknowledgements and Disclaimers



**Availability.** References in this presentation to IBM products, programs, or services do not imply that they will be available in all countries in which IBM operates.

The workshops, sessions and materials have been prepared by IBM or the session speakers and reflect their own views. They are provided for informational purposes only, and are neither intended to, nor shall have the effect of being, legal or other guidance or advice to any participant. While efforts were made to verify the completeness and accuracy of the information contained in this presentation, it is provided AS-IS without warranty of any kind, express or implied. IBM shall not be responsible for any damages arising out of the use of, or otherwise related to, this presentation or any other materials. Nothing contained in this presentation is intended to, nor shall have the effect of, creating any warranties or representations from IBM or its suppliers or licensors, or altering the terms and conditions of the applicable license agreement governing the use of IBM software.

All customer examples described are presented as illustrations of how those customers have used IBM products and the results they may have achieved. Actual environmental costs and performance characteristics may vary by customer. Nothing contained in these materials is intended to, nor shall have the effect of, stating or implying that any activities undertaken by you will result in any specific sales, revenue growth or other results.

© **Copyright IBM Corporation 2015. All rights reserved.**

- ***U.S. Government Users Restricted Rights - Use, duplication or disclosure restricted by GSA ADP Schedule Contract with IBM Corp.***

IBM, the IBM logo, ibm.com, Interconnect, Rational and DOORS are trademarks or registered trademarks of International Business Machines Corporation in the United States, other countries, or both. If these and other IBM trademarked terms are marked on their first occurrence in this information with a trademark symbol (® or ™), these symbols indicate U.S. registered or common law trademarks owned by IBM at the time this information was published. Such trademarks may also be registered or common law trademarks in other countries. A current list of IBM trademarks is available on the Web at “Copyright and trademark information” at [www.ibm.com/legal/copytrade.shtml](http://www.ibm.com/legal/copytrade.shtml)

Other company, product, or service names may be trademarks or service marks of others.

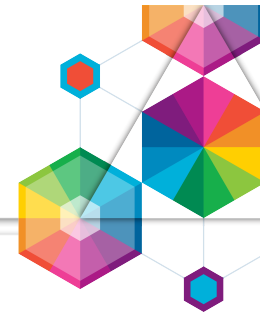
- REMINDER: Please follow the guidelines for copying third party materials. Third party screen shots, logos, presentations and website content are copyrighted materials owned by the third party, and as such we need permission from the third party to use them. Also, be sure the information you put on a chart is verifiable. Be sure to cite the source on your deck when using words, ideas, facts, photos, news clips or other expression that did not originate from yourself. This applies even if the content is publicly available and not confidential. If you have any questions, please contact your IP Attorney.



## RESTRICTION ON DISCLOSURE AND USE OF DATA

---

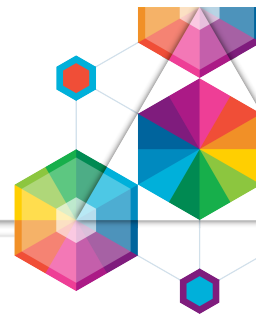
- This presentation includes data that shall not be disclosed outside the Government and shall not be duplicated, used, or disclosed -- in whole or in part -- for any purpose. This restriction does not limit the Government's right to use information contained in this data if it is obtained from another source without restriction. The data subject to this restriction is contained on pages marked: "IBM Confidential"
- The data in the pages of this presentation where so annotated contain trade secrets and commercial or financial information voluntarily submitted by IBM that are either specifically exempted from disclosure by statute or privileged or confidential within the meaning of the exemptions set forth in Section 552(b)(3) and (4), respectively, of the Freedom of Information Act, 5 U.S.C. 552, the disclosure of which could invoke the criminal sanctions of 18 U.S.C. 1905.



# Validity service – Going beyond suspects

---

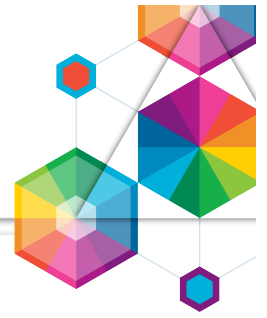
- Introduction to the Validity Service
- Rational Team Concert – Validity Editor
- Design topics



# What is Validity?

- Validity is a property of a link, where a link connects two artifacts (the “source” artifact and the “target” artifact).
- A link is valid if the semantics of the link is satisfied by the two artifacts connected by that link.
- A link can have one of the following link validity status values:
  - Valid: the link is known to be valid
  - Invalid: the link is known not to be valid
  - Suspect: the validity status of the link is unknown





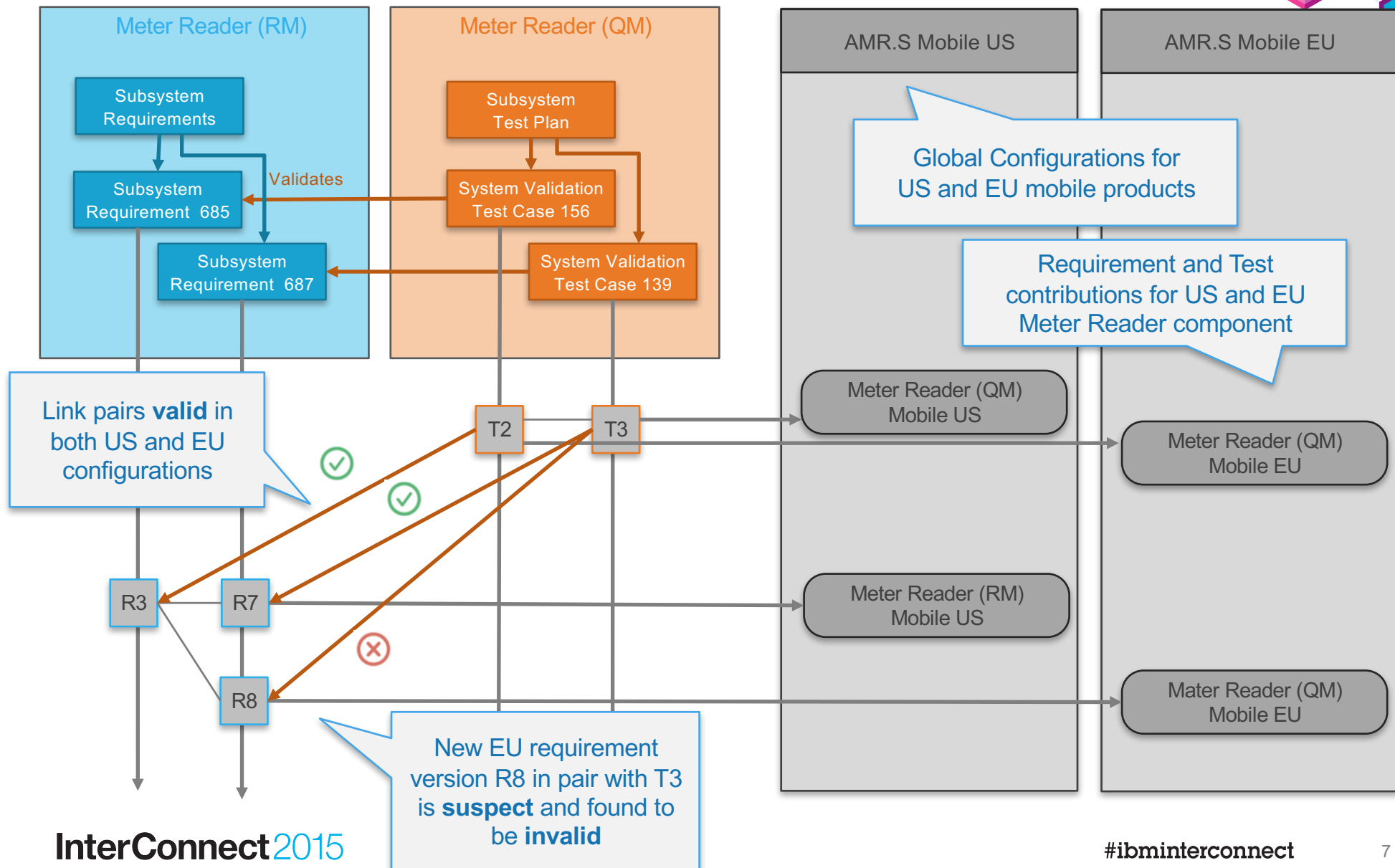
# Validity in a Configuration

---

- A configuration is a set of states (“versions”) of versioned artifact and a set of artifact links. A configuration contains at most one version of a given versioned artifact.
- An artifact link is valid in a configuration if the versions selected by the configuration for the source and target artifacts of the link satisfy the semantics of the link.



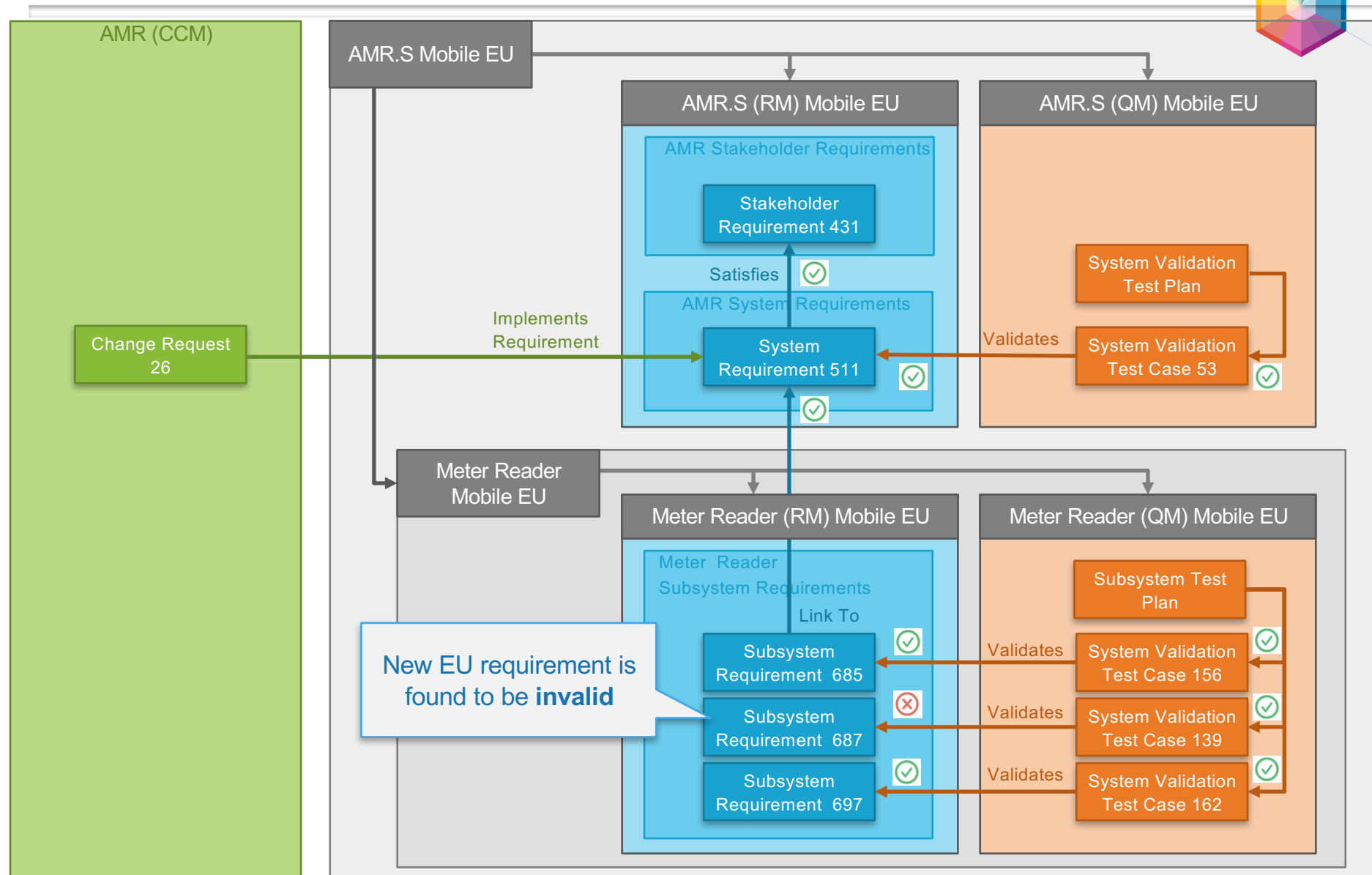
# Validity in a Configuration

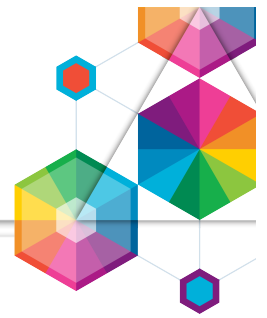






# Validity in a Configuration – Artifact Traceability

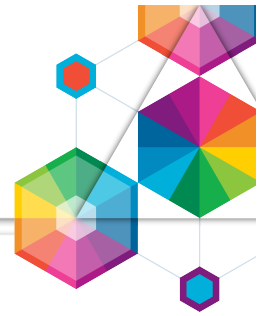




# A Validity Service

---

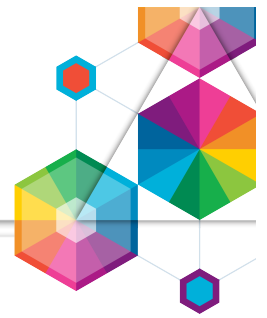
- A validity service manages tuples with the following required fields:
  - A link type identifier
  - A source artifact identifier
  - A source state identifier
  - A target artifact identifier
  - A target state identifier
  - A Boolean indicating valid or invalid
- Additional optional fields:
  - Tuple creation date
  - Tuple creation user id
  - Tuple deletion date
  - Tuple deletion user id



# Validity Use Cases

---

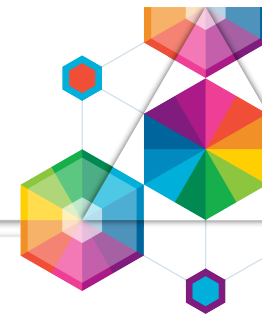
- Assert that a given link in a given configuration is valid
- Assert that a given link in a given configuration is invalid
- Assert that a given link in a given configuration is suspect
- For a given configuration and link, display the validity status of that link
- For a given configuration, link, and source artifact, display all of the valid target artifact versions
- For a given configuration, link, and target artifact, display all of the valid source artifact versions



# Validity vs. Suspicion

---

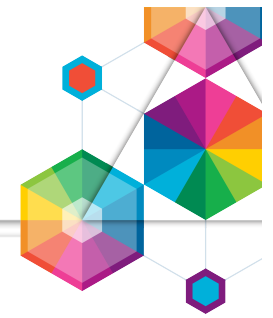
- Suspicion is another way of maintaining Valid/Suspect link status (but usually does not maintain Invalid link status)
- Suspicion is logically based on date stamps: an artifact relation is valid if the “validity date” of the link is greater than the “modification date” of the source and target artifacts.
- Suspicion does not work well in a versioned environment, because when a set of changes are merged to another configuration, all links that are connected to an artifact updated by the merge become suspect. In contrast, validity information is effectively carried forward with a merge. In addition, when validity is asserted in one configuration, that information is effectively “broadcast” to any other configuration that selects the same artifact versions.



# Versioned Link Service

---

- For a given configuration, a given source artifact with a version selected by the configuration, and a given link, a versioned link service provides the following link status values:
  - Exists: The link is selected by the configuration, and a version of the link target is selected.
  - Potential: The link is not selected by the configuration, but a version of the link target is selected.
  - Dangling: The link is selected by the configuration, but no version of the link target is selected.
  - Potential dangling: The link is not selected by the configuration, and no version of the link target is selected.
- Validity and Versioned Link Service Use Cases
  - For a given configuration, link, and source artifact, display all of the potential and/or dangling valid target artifact versions.
  - For a given configuration, link, and target artifact, display all of the potential and/or dangling valid source artifact versions.



# Validity Use-Cases

---

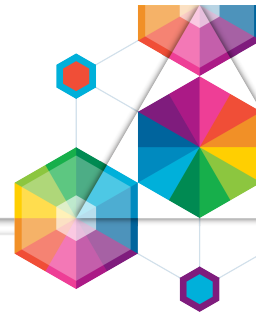
- As a system engineer I need to, after replacing a contribution in a global configuration, **identify links that are suspect of no longer being valid, or declared as invalid**
- As a system engineer I need to **inspect an artifact and see annotations** on links visualizing the link validity
- As a system engineer I need to **set the validity** on a link in a configuration
- As a system engineer I need to select a link, **browse known validity** on pairs of source and target artifact versions
- As a system engineer I need to **identify a valid link and accept / merge the artifact version** into my configuration



# Rational Team Concert – Validity Editor

- Validity implemented in Rational Team Concert for ASPICE extension
- Validity across file versions in SCM configurations

File 1 Path	File 1 Status	File 2 Path	File 2 Status	Association Type
? /design/FileA.xml	Not Associated			
? /design/FileB.xml	Not Associated			
? /design/FileC.xml	Not Associated			
? /src/FileA.c	Not Associated			Review
✗ /src/FileA.c	Not Valid	/test/FileA.tst	Not Valid	Unit Test
? /src/FileB.c	Not Associated			Review
✓ /src/FileB.c	Valid	/test/FileB.tst	Valid	Unit Test
? /src/FileC.c	Not Associated			Unit Test
? /src/FileC.c	Not Associated			Review
? /test/FileC.tst	Not Associated			



# Validity - User Experience Design

- Suspect capabilities adopting Link validity service
- Validity state visible and set on links and traceability views

Suspect column in Module / Validity view

The screenshot displays the Requirements Management (RM) interface. The top navigation bar includes 'Project Dashboard', 'Artifacts', 'Collections', 'Modules', and 'Reports'. The main content area shows a table of requirements with columns for 'ID', 'Contents', 'Satisfies', and 'Suspect'. The 'Suspect' column contains icons representing the validity state of each requirement. A tooltip is visible over one of the 'Suspect' icons, showing the text 'The state of the linked artifact is: Suspect' and three buttons: 'Set Valid', 'Set Invalid', and 'Browse'. The 'Set Invalid' button is highlighted with a red circle. The bottom of the screen shows 'Showing 73 of 73 Artifacts' and the IBM logo.

Review and Set validity state by hovering over suspect icon Or browse know valid states



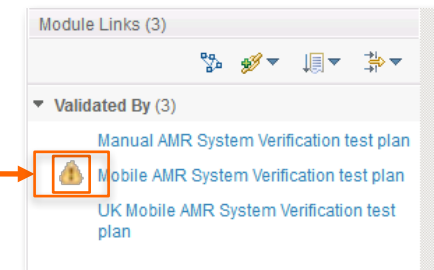


# Validity - User Experience Design

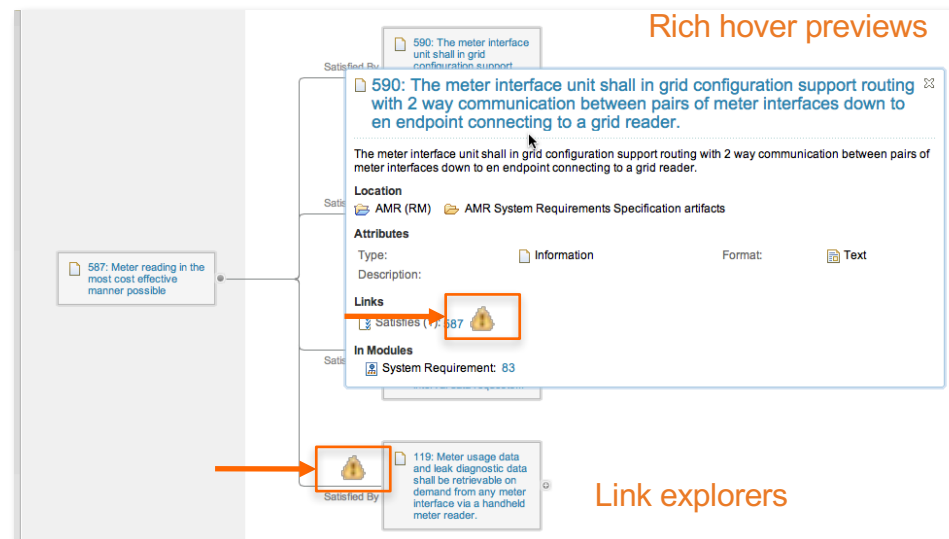
- Validity information available on link information (examples)

Link views

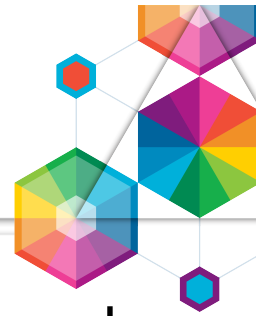
Traceability views



Rich hover previews

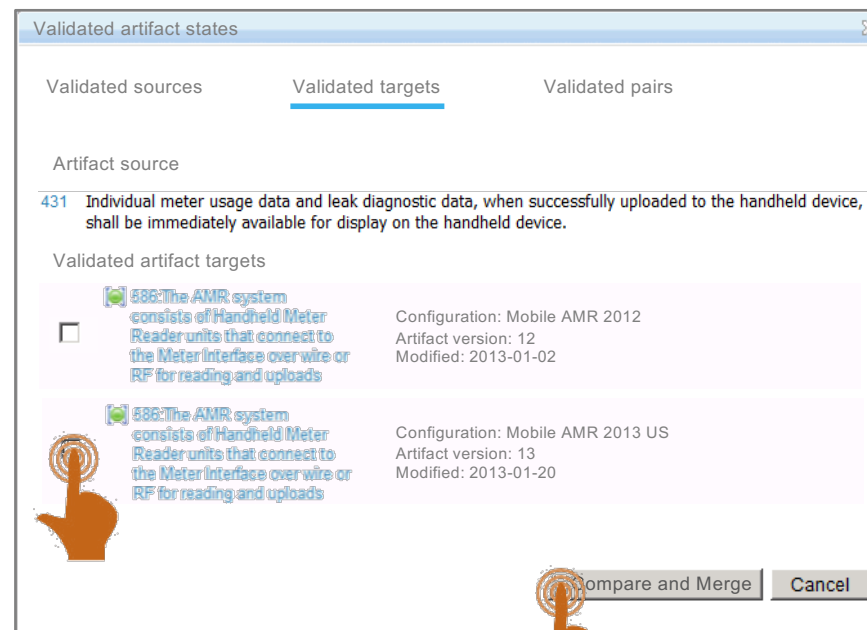


Link explorers



# Validity - User Experience Design

- Using the link service, linked pairs with known valid state can be explored: Valid sources / Valid targets / Valid pairs
- A new version(s) of linked artifact(s) can be selected (and merged) into the current configuration context



# Thank You

Your Feedback is  
Important!

Access the InterConnect 2015  
Conference CONNECT Attendee Portal  
to complete your session surveys from  
your smartphone, laptop or conference  
kiosk.



## InterConnect2015

The Premier Cloud & Mobile Conference

#ibminterconnect

